



# 3333 MISSION STREET

## San Francisco, CA

### FOR SALE

16,000 SF retail building including 19 parking stalls as part of a larger mixed use project.



THE  
**EDWARDS  
COMPANY**  
commercial real estate services

For further information, contact:  
**The Edwards Company**  
916.277.8120

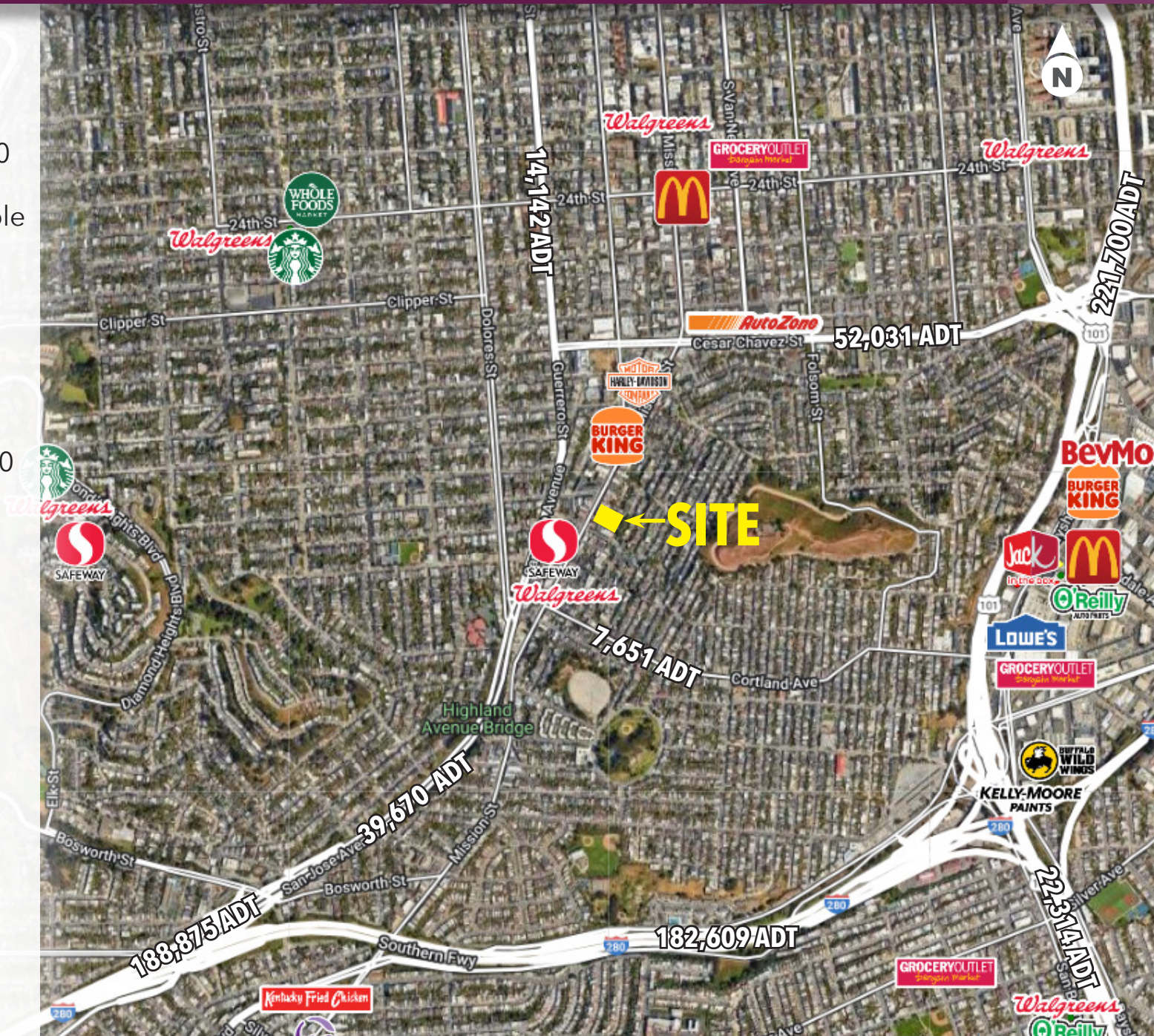
**Steve Edwards**  
steve@theedwardsco.com  
Lic # 00977718

PARTNER **XTEAM**  
RETAIL ADVISORS

© 2020 The Edwards Company. All Rights Reserved. The information contained herein has been carefully compiled from sources considered reliable; however, we make no guarantee, warranty, or representation of its accuracy. You and your tax and legal advisors should conduct your own investigation of the property and transaction.

# PROPERTY HIGHLIGHTS

- Located in historic Bernal Heights established in 1860
- Monument signage available on Mission Street
- Excellent transit availability
- 19 Retail exclusive parking stalls
- Site is located near Hwy 280 and Hwy 101
- Strong demographics, daytime population, and traffic counts
- Immediate availability

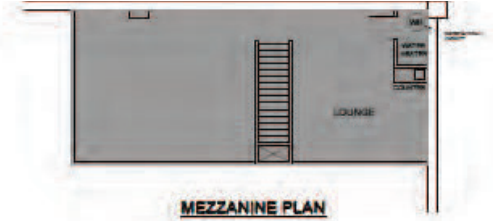


# FLOOR PLAN

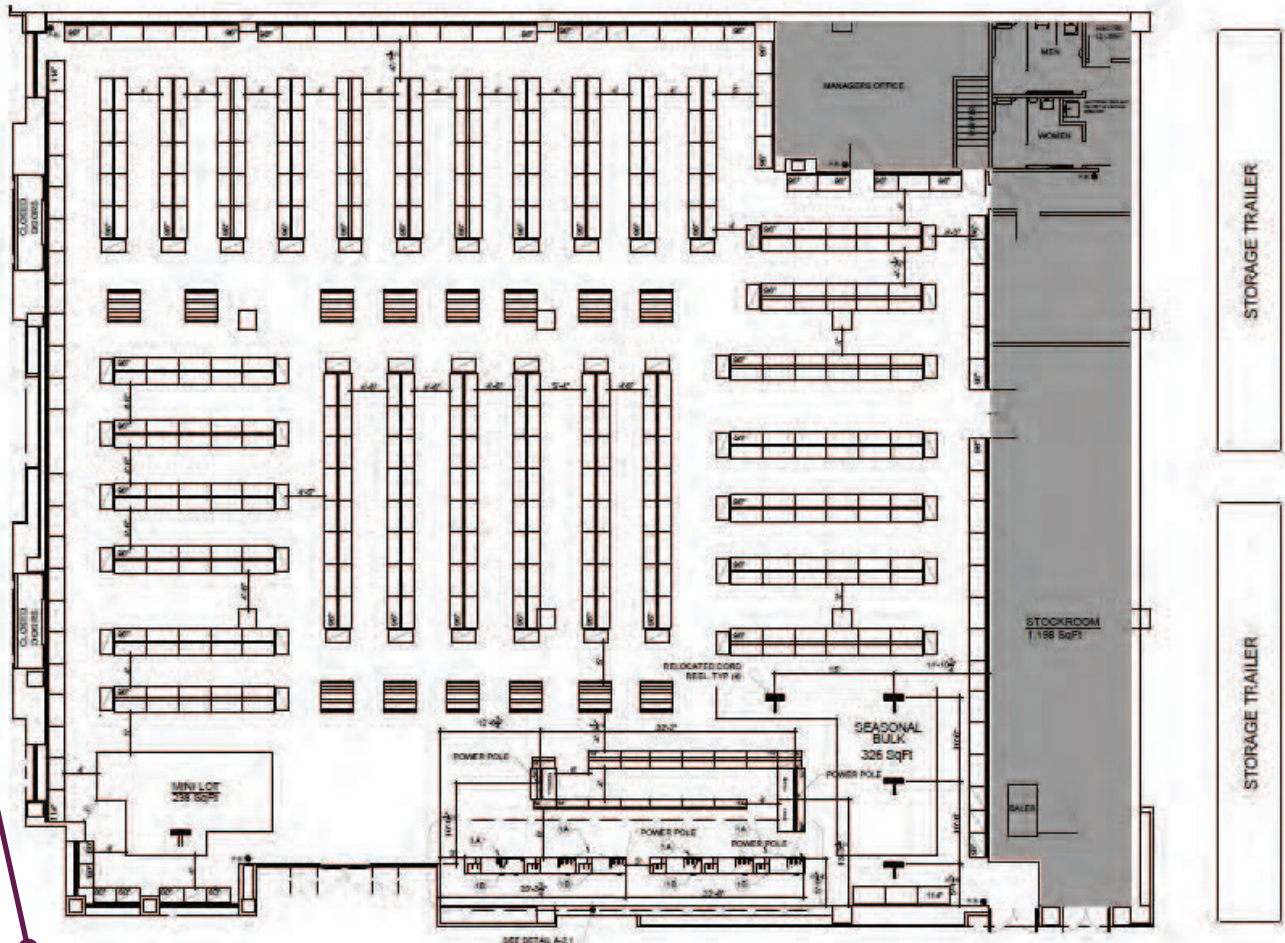


## ELECTRICAL CODED NOTES

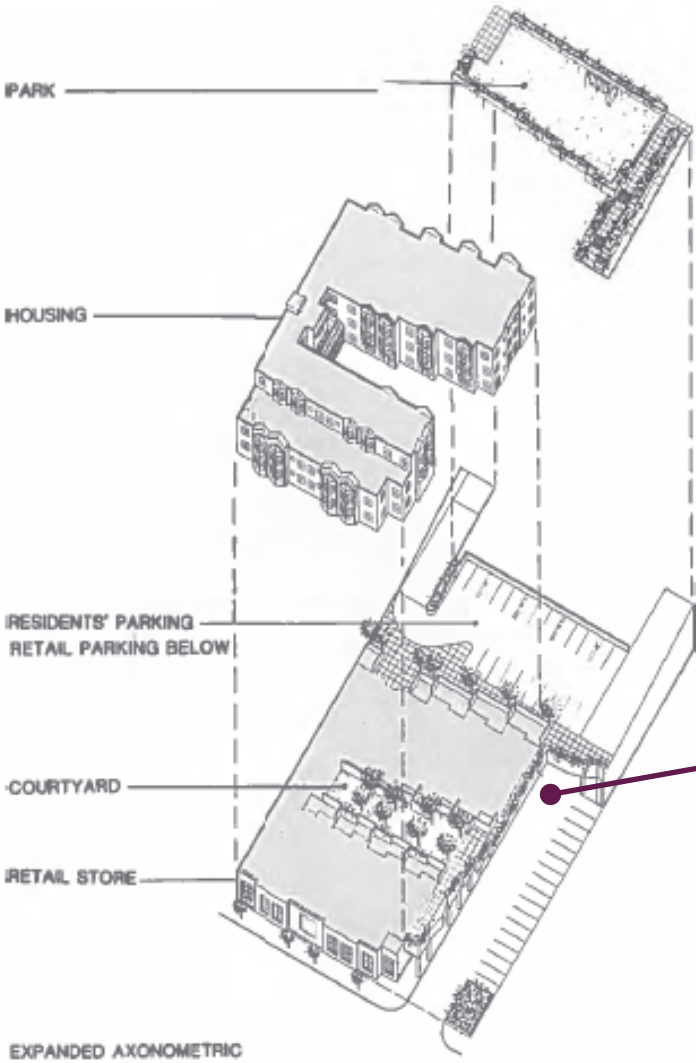
- 1A) ELECTRICAL CONTRACTOR TO USE ELECTRICAL CIRCUITS EXISTING CURRENTLY IN CHECKOUT CABINETS BEING REPLACED FOR THE DEDICATED GENERAL PURPOSE CIRCUIT INDICATED.
- 1B) ELECTRICAL CONTRACTOR TO USE ELECTRICAL CIRCUITS EXISTING CURRENTLY IN CHECKOUT CABINETS BEING REPLACED FOR THE DEDICATED GROUND CIRCUIT INDICATED.



HATCH INDICATES NO WORK IN THIS AREA

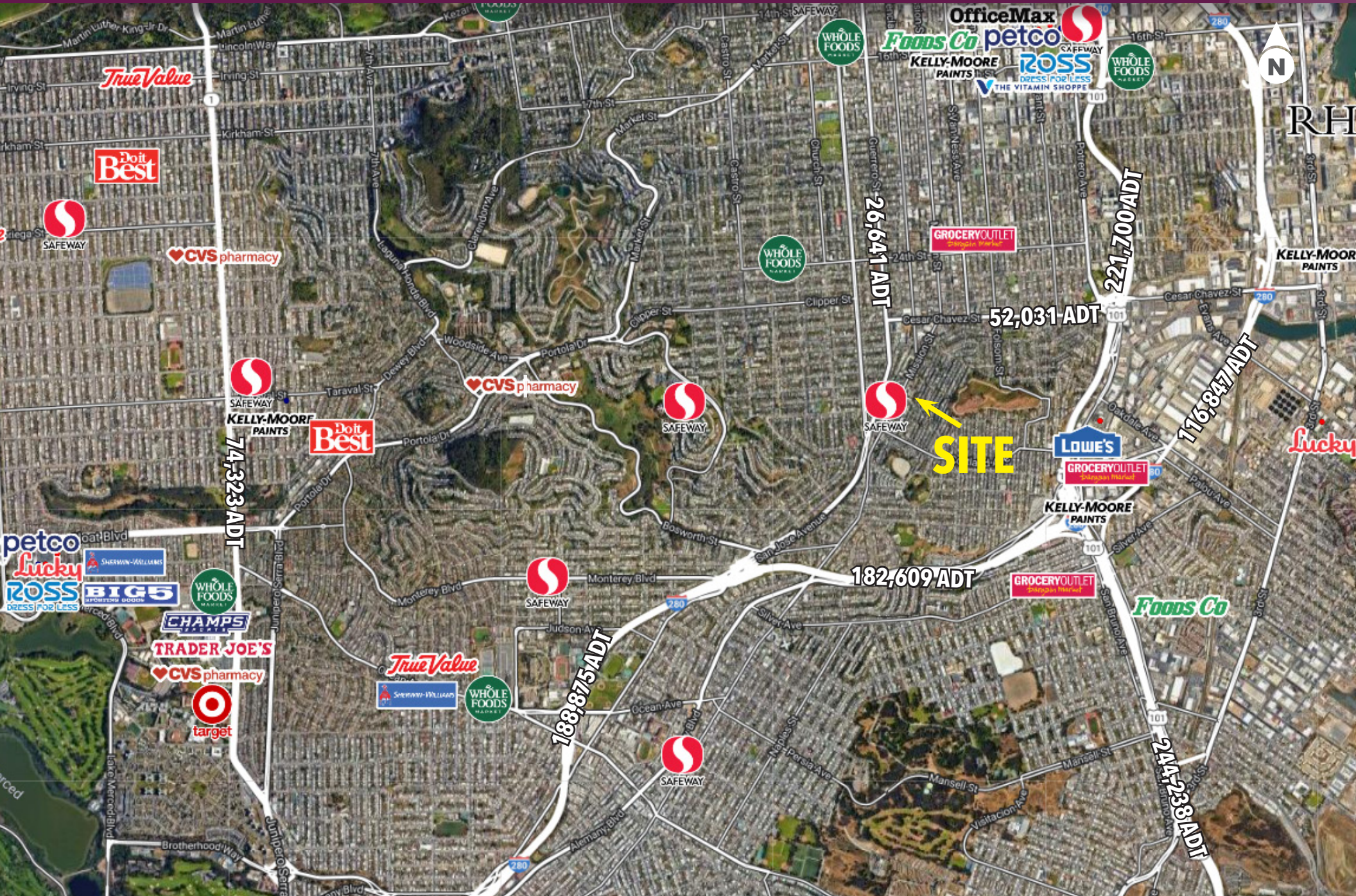


# AXONOMETRIC PLAN



# TRADE AREA AERIAL

San Francisco, CA



# DEMOGRAPHICS

3 Mile Radius

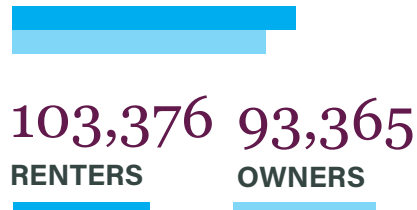
**494,119**  
POPULATION

**2.4**  
AVE HH SIZE

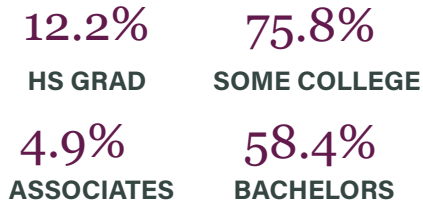
**\$196,221**  
AVE HH INCOME

**39.6**  
MEDIAN AGE

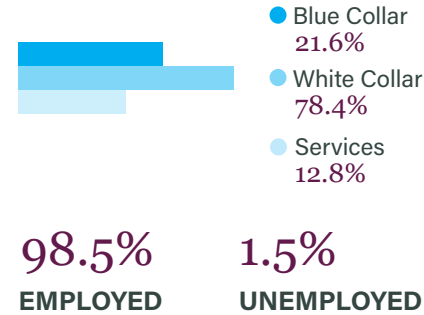
 **HOME OWNERSHIP**



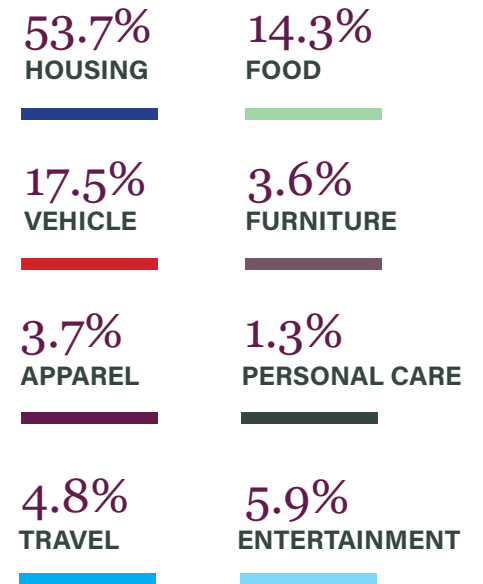
 **EDUCATION**




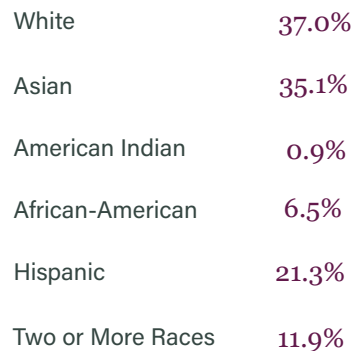
 **EMPLOYMENT**



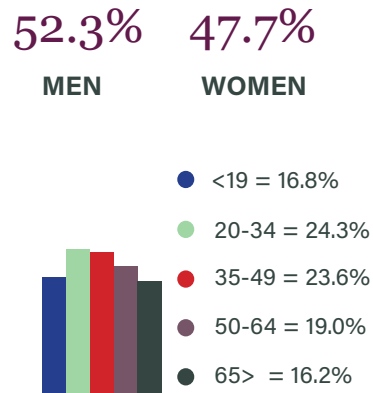
 **AVERAGE MONTHLY HOUSEHOLD SPENDING**



 **RACE & ETHNICITY**



 **GENDER & AGE**



 **INCOME BY HOUSEHOLD**

